

## Thank you for your interest in seasonal employment!

*Retain this sheet for your information*

To apply, complete the *Application Form* and *General Physical Requirements of Seasonal Positions*. To be considered for seasonal employment, all documents are required to be completed correctly.

The following information needs to be considered prior to submitting your application.

### ***Length of Seasonal Work***

Historically, the crushing season commences early June through to November/ December each year. The length of the season is heavily dependent on crop size and weather conditions.

### ***Fitness for Duty***

Prior to being offered employment, you will be required to undergo fitness for duty screening to test for the presence of alcohol and/or illicit substances. The Company will cover expenses related to this testing.

### ***Smoke-free workplace***

Smoking is not permitted on Tully Sugar Limited worksites. The only exception is a designated area in the main carpark.

### ***Hours of Work***

Tully Sugar Limited operates 24 hours a day, 7 days a week during the crushing season. Therefore, most seasonal positions involve shift work. Depending on the position, you will either work 8h or 12h shifts on a rotating 4-week roster.

In addition to ordinary hours, there is an expectation for employees be available to work reasonable amounts of overtime although overtime is not guaranteed by the Company.

### ***Wages as at 1.04.2025***

Day work entry level - Level 2	Gross: \$1,323.15	Net: \$1,076.15
Shift work entry level - Level 2	Gross: \$1,795.81	Net: \$1,397.81

\*Wage rates are indicative only. Shift work rate is an average over a 4-week roster cycle and includes shift allowances, weekend penalties and a rostered overtime shift. Additionally, you will accrue leave entitlements that are paid out at the end of your contract.

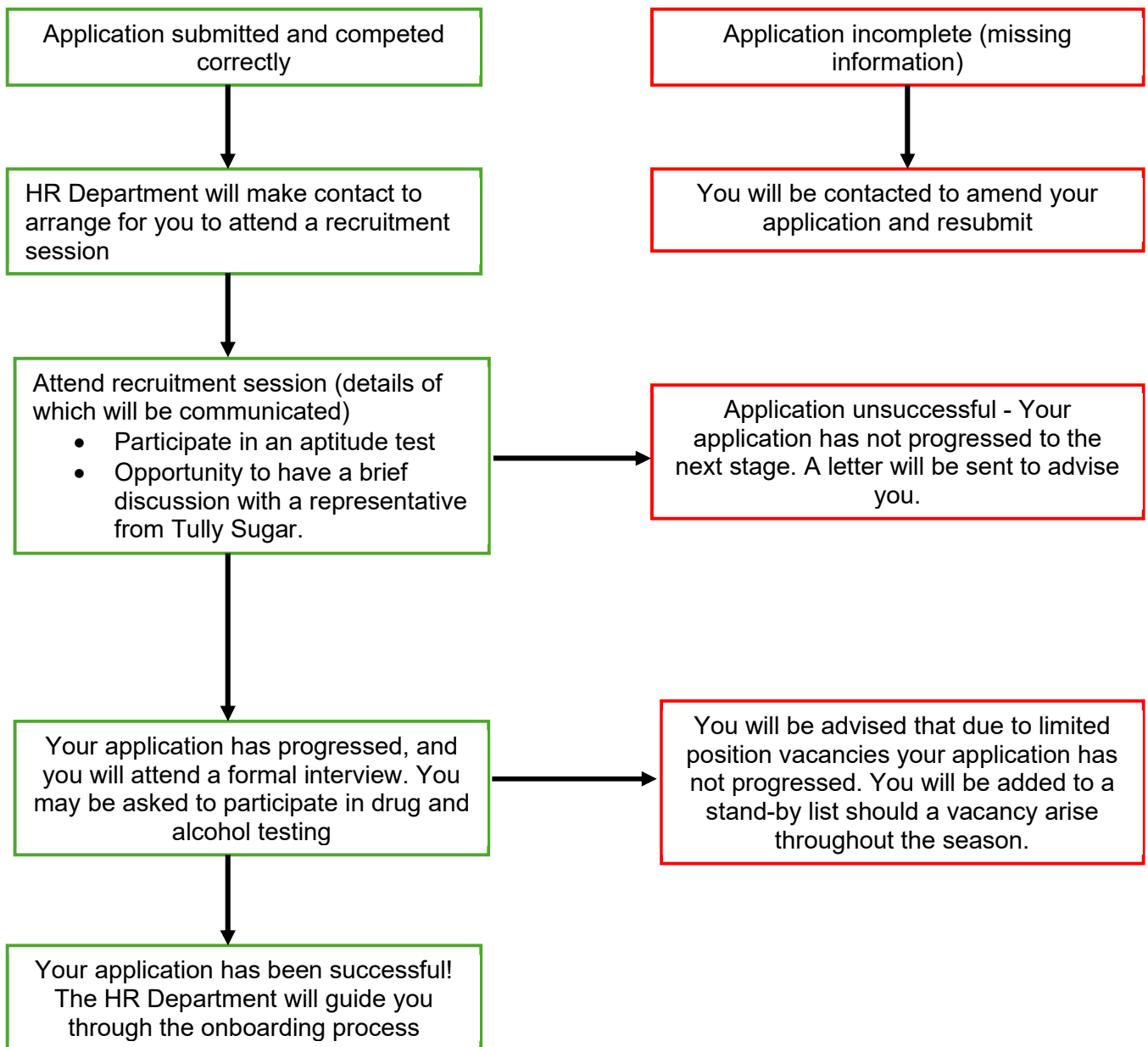
### ***Clothing***

3 sets of high visibility, long pants, long sleeved shirts and 1 pair of steel cap boots are required to be worn and are provided by the company.

*If you choose to proceed with your application, submit it at the administration or payroll office.*

***Turn over the page to see the process that follows***

# You've submitted your application - what happens next?



If you have any enquires or require any further information, please do not hesitate to contact me on 4068 4776

*Ann Barrie*

Training/Recruitment Co-ordinator

## POSITION REQUIREMENTS - GENERAL MILL WORKER

*Please see below descriptions of various physical requirements for this role. Pictures are indicative only and actual tasks may vary.*

Wear required PPE



Shoveling and cleaning up of various materials including oil and grease



Climbing Stairs/ ladders including:

Vertical stairs (lanyard must be worn)



Factory stairs to multiple levels



Pressure Cleaning



Sweeping



## POSITION REQUIREMENTS - GENERAL MILL WORKER

*Please see below descriptions of various physical requirements for this role. Pictures are indicative only and actual tasks may vary.*

Sledge hammering



Angle Grinding



Pushing and pulling to move loads



## POSITION REQUIREMENTS - LOCOMOTIVE DRIVER'S ASSISTANT

*Please see below examples of various physical requirements for this role. Pictures are indicative only and actual tasks may vary.*

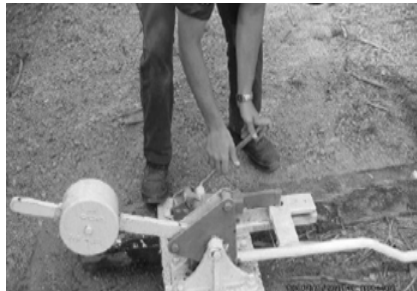
### Walking on various terrains

- Uneven surfaces



### Turning over of points

- Squatting, kneeling, pushing, pulling, lifting with one or both arms



## POSITION REQUIREMENTS - LOCOMOTIVE DRIVER'S ASSISTANT

*Please see below examples of various physical requirements for this role. Pictures are indicative only and actual tasks may vary.*

### Coupling and uncoupling of bins

- Kneeling, bending whilst reaching forward



### Accessing Locomotive and Brake Van

- Stepping up and down from fixed angle and vertical steps (whilst maintaining 3 points of contact)



### Getting under cane bins and placing chocks to stop bins from moving

